



California's Medication Assisted Treatment (MAT) Expansion Project

Michael Freeman, Section Chief
Substance Use Disorder Compliance Division
April 8, 2019



Opioid Epidemic in California

In 2017, California had ...

- 2,196 opioid overdose deaths
- 429 fentanyl overdose deaths
- 4,281 opioid overdose ED visits (excluding heroin)
- 21,787,042 opioid prescriptions



Statewide Coordinated Efforts

Department of Public Health	Department of Health Care Services	Department of Justice	Public-Private Partnership
<p>Opioid Dashboard Tracks overdose deaths, emergency department (ED) visits, prescribing; generates instant reports; state, county, and zip code level data available</p> <p>Statewide Opioid Safety Workgroup 12+ state agencies participating</p>	<p>Drug Medi-Cal Organized Delivery System Access to full spectrum of addiction treatment; 26 counties have been approved by CMS & DHCS to implement ODS services – 14 other counties in process</p> <p>MAT Expansion Project Increase access to MAT, reduce unmet treatment need, and reduce opioid overdose related deaths</p>	<p>CURES Database Contains a record of every controlled substance dispensed at any pharmacy in California</p>	<p>Smart Care CA Works with health plans covering 40% of CA lives to fight the opioid epidemic</p> <p>California Health Care Foundation</p> <p>CA Opioid Safety Network 43 counties representing more than 90% of Californians</p>



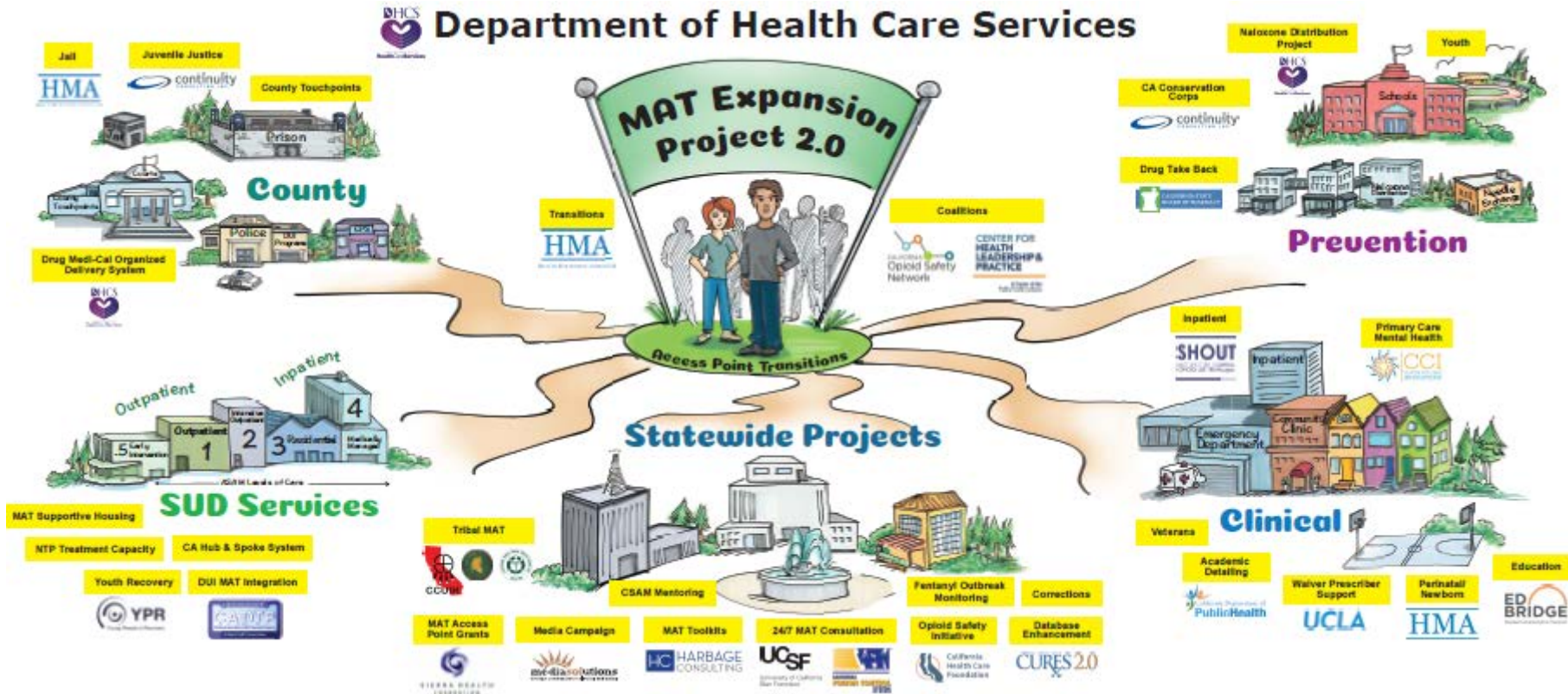
Funding Sources

State Targeted Response (STR) to the Opioid Crisis	State Opioid Response (SOR) Grant
<ul style="list-style-type: none">• \$90 million over a period of 2 years• May 2017 to April 2019• MAT Expansion Project 1.0<ul style="list-style-type: none">– California Hub & Spoke System– Tribal MAT Project– Prevention & treatment activities	<ul style="list-style-type: none">• \$140 million over a period of 2 years• September 2018 to September 2020• MAT Expansion Project 2.0<ul style="list-style-type: none">– Increase access to MAT– Reducing unmet treatment need– Reduce opioid overdose related deaths through prevention, treatment, and recovery services



MAT Expansion Project

Department of Health Care Services





MAT Expansion Project Objectives

1. Develop additional MAT locations through strategic access points
2. Provide MAT services to specialized or underserved populations
3. Transform entry points for individuals with an OUD and create effective referrals into treatment
4. Develop coordinated referral processes to better manage high-risk transitions of care (e.g. jails or hospital re-entry)
5. Engage prospective and current prescribers to increase provision of MAT
6. Enact overdose prevention activities to prevent opioid misuse and OUD deaths



Overview of Key MAT Expansion Projects

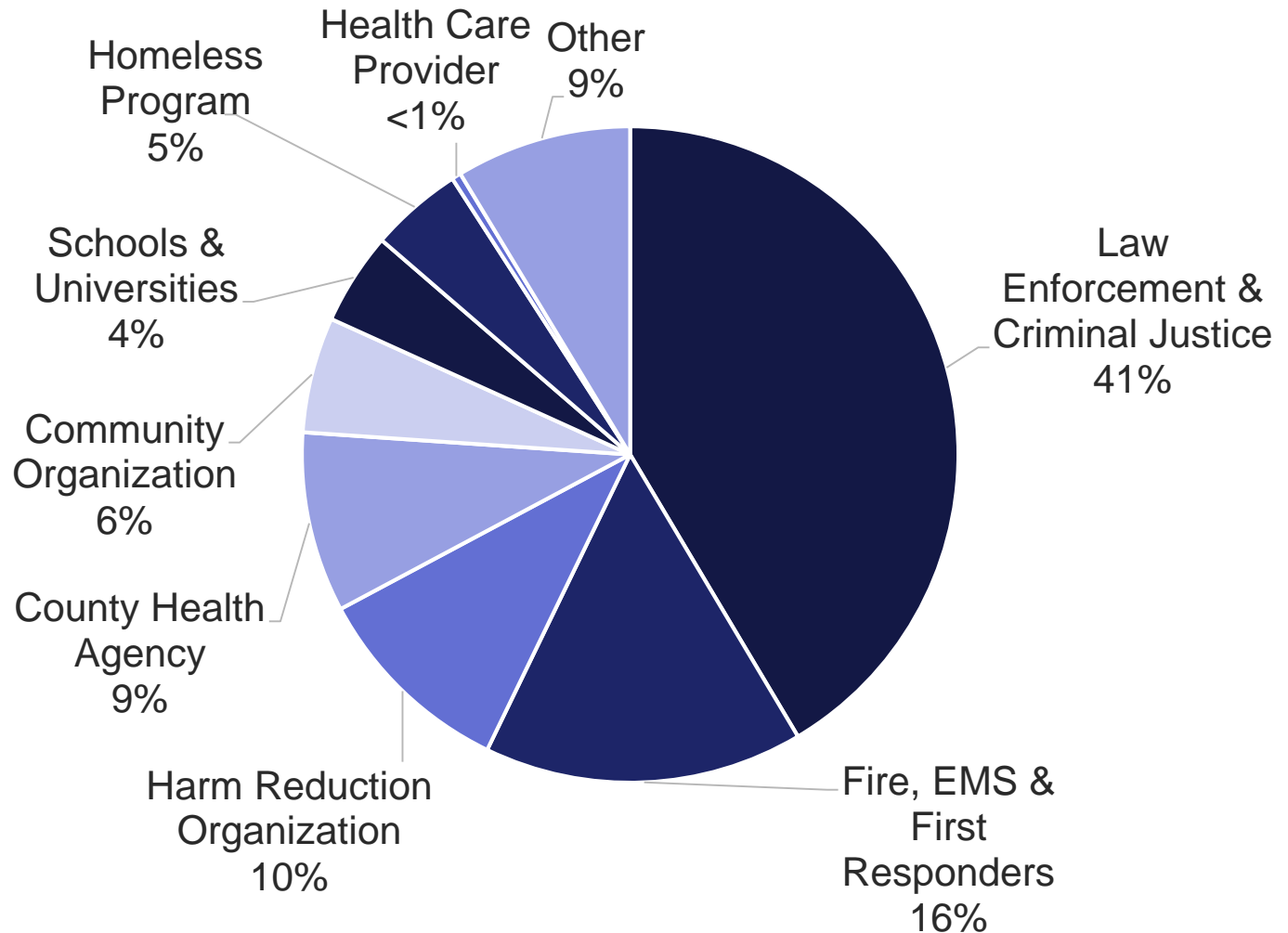


The Naloxone Distribution Project (NDP)

- The NDP aims to reduce opioid overdose deaths through the provision of free naloxone, in its nasal spray formulation. Entities apply to DHCS to have naloxone shipped directly to their address.
- The program started October 1, 2018 and hundreds of applications have been received. Eligible entities include law enforcement agencies such as police departments, county jails and probation; fire, EMS and first responders; schools and universities; county public health and behavioral health departments; harm reduction organizations; and community organizations such as local opioid coalitions.
- The NDP has distributed more than 155,000 units of naloxone since October 2018.
- To download the application and for more information, visit the DHCS website: <https://bit.ly/2w2Vx9f>.



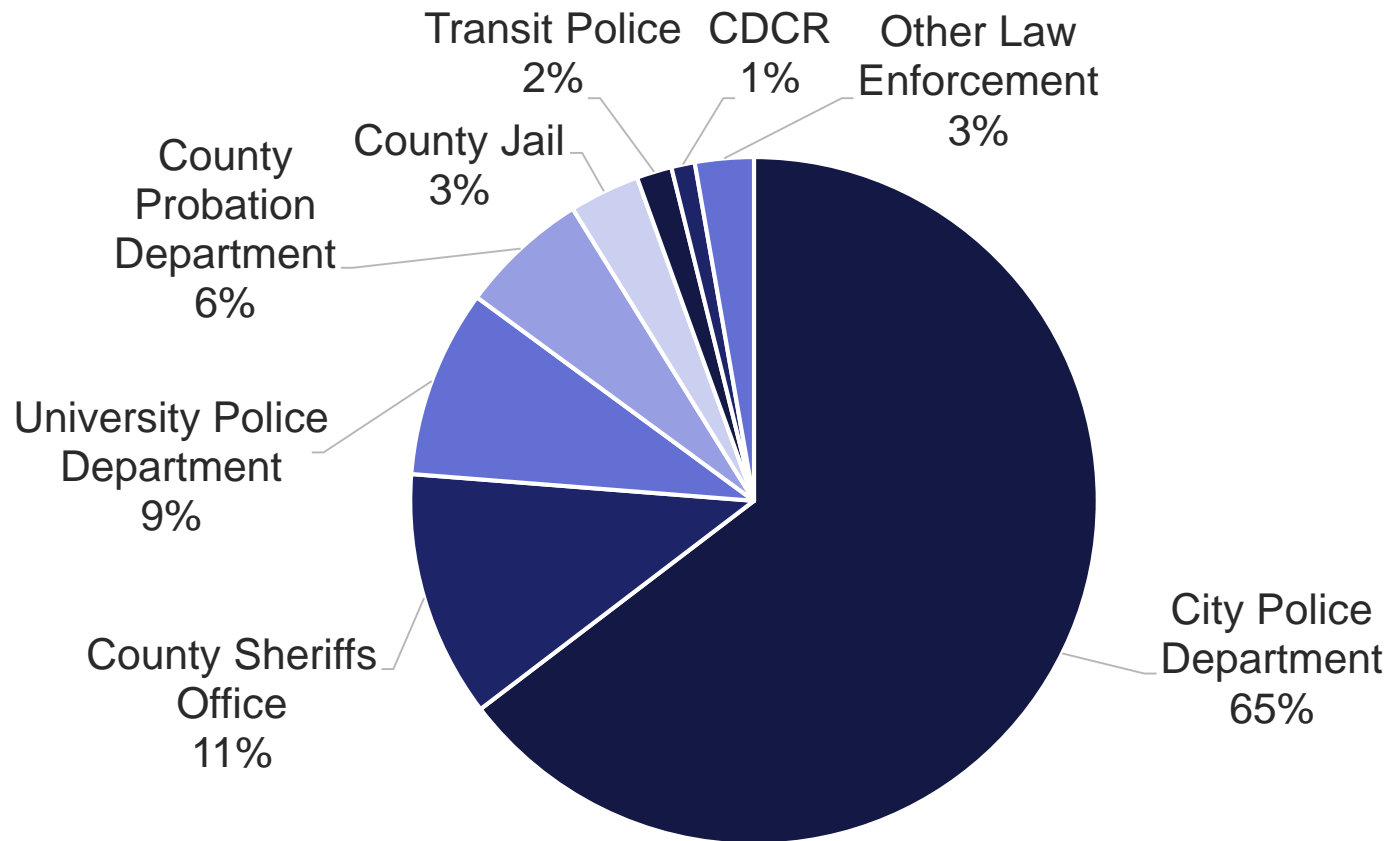
NDP Applications by Type of Organization



NOTE: Applications as of March 11, 2019.



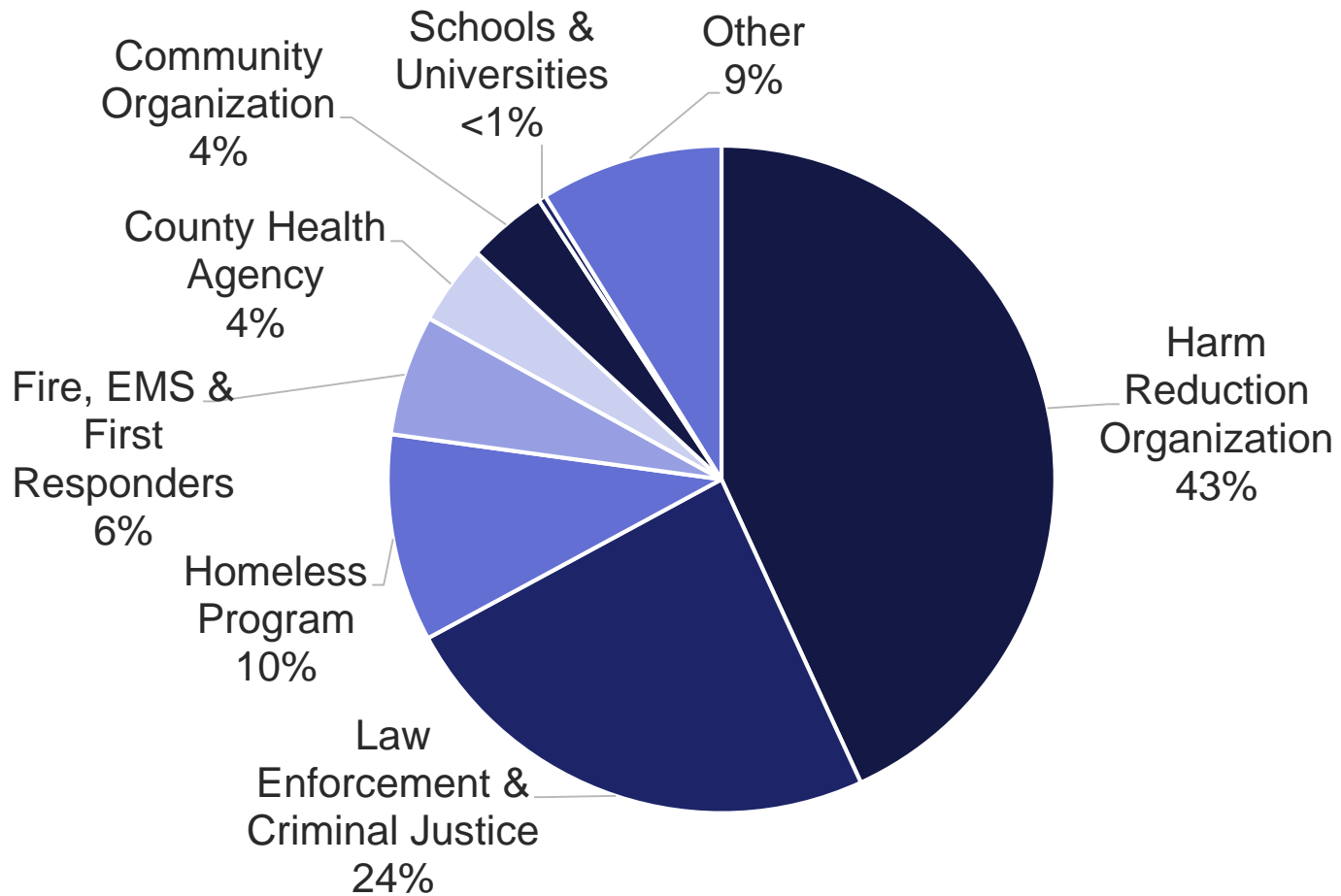
Law Enforcement Applications



NOTE: Applications as of March 11, 2019.



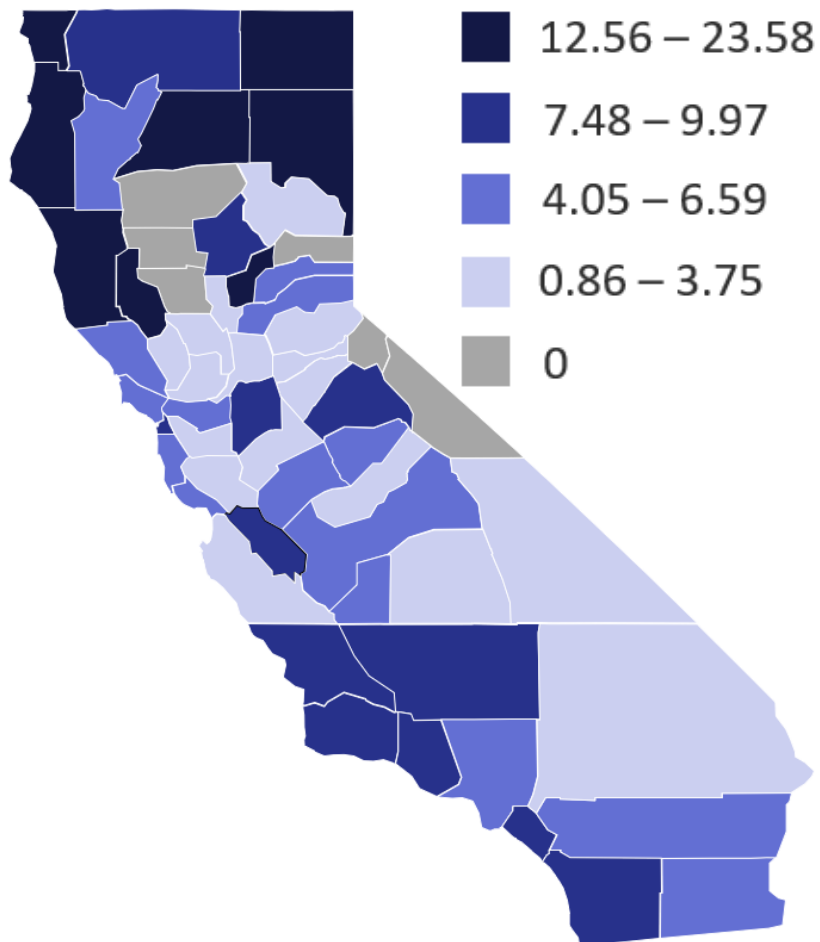
Naloxone Units by Type of Organization



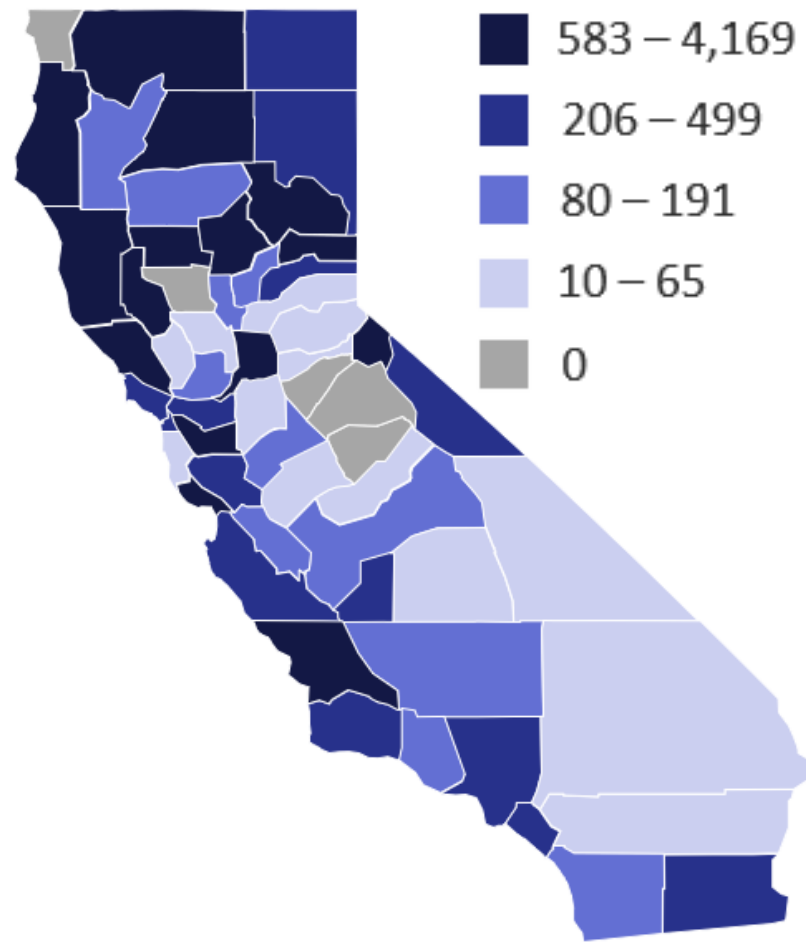
NOTE: Naloxone units as of March 11, 2019.



Opioid Overdoses per 100,000 Residents, 2017



Approved Naloxone Units per 100,000 Residents, 2018-19



SOURCES: Overdose Rates - California Department of Public Health, "California Opioid Overdose Surveillance Dashboard"; accessed December 2018. Population data - State of California Department of Finance, "E-1 Population Estimates for Cities, Counties, and the State — January 1, 2017 and 2018"; accessed December 2018. Naloxone units as of March 11, 2019.



Sacramento County NDP

Organizational / Individual Name	Type of Organization	If "Other", describe	# Units Approved by DHCS
Sacramento County Department of Behavioral Health Services	County Health Agency	County Behavioral Health Agency	12
Safer Alternatives thru Networking & Education (SANE) Harm Reduction Services	Harm Reduction Organization		1620
	Harm Reduction Organization		2400
Sacramento Police Department	Law Enforcement & Criminal Justice	City Police Department	108
Gender Health Center	Harm Reduction Organization		2400
Elk Grove Unified School District	Schools & Universities		24
American River College	Schools & Universities		12
West Sacramento Police Department	Law Enforcement & Criminal Justice	City Police Department	84
Sacramento City College	Schools & Universities		12
Sacramento Police Department	Law Enforcement & Criminal Justice	City Police Department	168
Sacramento County Sheriff's Dept.	Law Enforcement & Criminal Justice	County Sheriffs Office	300
Los Rios CCD Police Department	Law Enforcement & Criminal Justice	University Police Department	48
County of Sacramento	Community Organization	County Public Health Agency	12
Folsom Police Department	Law Enforcement & Criminal Justice	City Police Department	48
Sacramento County Park Rangers	Law Enforcement & Criminal Justice	Other Law Enforcement	48
		TOTAL	7296



California Bridge Program

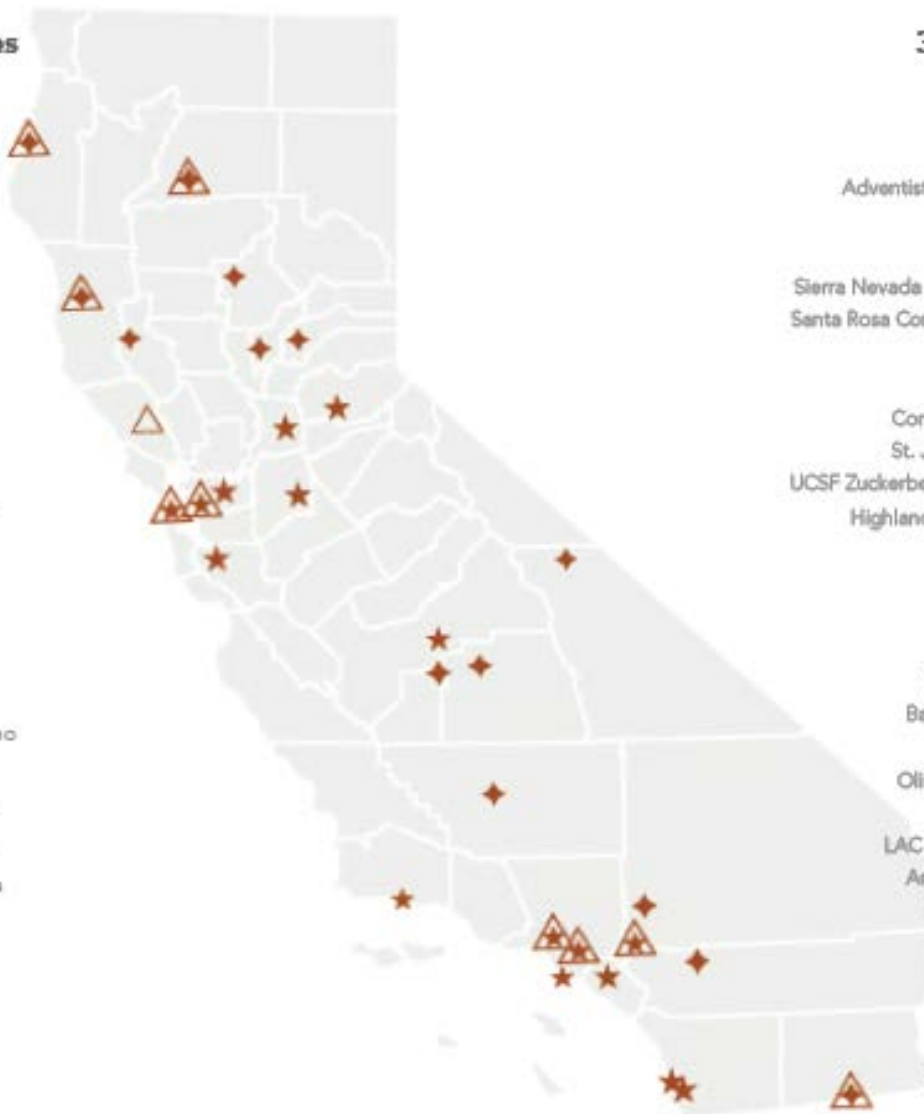


- The California Bridge Program is developing hospitals and emergency rooms into primary access points for the treatment of acute symptoms of SUDs – enhancing and increasing access to 24/7 treatment in every community in the state.
- As of March 2019, 31 health care facilities are participating in the California Bridge Program, spanning 27 counties throughout the state.
- Participating sites address substance use disorders as a treatable chronic illness and utilize harm reduction techniques, such as naloxone distribution, to minimize the risks associated with substance use disorders.
- The program has been profiled in the [New York Times](#) and [Vox](#).
- Technical assistance materials are available to any clinician at www.bridgetotreatment.org.



27 counties

Alameda
Butte
Contra Costa
El Dorado
Fresno
Humboldt
Imperial
Inyo
Kern
Kings
Lake
Los Angeles
Mendocino
Nevada
Orange
Riverside
Sacramento
San Bernardino
San Diego
San Francisco
San Joaquin
Santa Barbara
Santa Clara
Shasta
Sonoma
Tulare
Yuba



31 health care facilities

St. Joseph Hospital (Eureka)
Shasta Regional Medical Center
Enloe Medical Center
Adventist Health Howard Memorial Hospital
Sutter Lakeside
Adventist Health Rideout
Sierra Nevada Memorial Hospital-Miners Hospital
Santa Rosa Community Health Center - Brookside
UC Davis
Marshall Medical Center
Contra Costa Regional Medical Center
St. Joseph's Medical Center (Stockton)
UCSF Zuckerberg San Francisco General Hospital
Highland Hospital, Alameda Health System
Santa Clara Valley Medical Center
Northern Inyo Hospital
UCSF Fresno
Adventist Health Hanford
Kaweah Delta Hospital Foundation
Bakersfield Memorial Medical Center
Santa Barbara Cottage Hospital
Olive View LAC+ USC Medical Center
St. Mary's Medical Center
LAC + USC Medical Center Foundation
Arrowhead Regional Medical Center
LAC/Harbor UCLA Medical Center
UC Irvine
San Geronio Memorial Hospital
UC San Diego
Scripps Mercy Hospital
El Centro Regional Medical Center

★ Star sites will become regional 'centers of excellence' for initiating treatment for substance use disorders from the inpatient ED, or prenatal settings and work with other hospitals to spread best practices.

◆ Rural Bridge sites will provide new access points for evidence-based treatment for substance use disorders primarily, in the emergency department.

△ Bridge clinics offer 'low-threshold' follow-up for patients started on treatment in the acute care setting, assisting patients with overcoming barriers to continued long term outpatient treatment in the community.



California Bridge Program - SUN



WHAT IS A SUN?

A substance use navigator (SUN) is a care coordinator and an integral team member that improves access to Medication for Opioid Use Disorder (MOUD). A SUN is embedded within either an emergency department (ED) or an inpatient setting to assist patients to begin and remain in addiction treatment via motivation, resources, and encouragement. An essential link to the community, SUNs outreach to treatment partners and facilitate transitions from the acute care setting to outpatient treatment. They also provide a direct link to organizations and individuals seeking treatment.



Expanding Access to MAT in County Criminal Justice Settings

- Focuses on expanding access to at least two forms of MAT to persons in jails and drug courts.
- 23 participating counties form teams consisting of leaders from jail health care services, jail custody operation, county manager's office, probation, drug courts, county AOD programs, and others.
- Teams participate in in-person learning collaboratives to expand knowledge of addiction treatment, share best practices, and develop or expand county-specific MAT programs in jails and drug courts.
- Teams receive monthly coaching calls and technical assistance. A series of webinars and podcasts specific to MAT in criminal justice are available to the teams and to the public at <https://matincountycj.healthmanagement.com/>.



Expanding Access to MAT in County Criminal Justice Settings



GOALS

The overall goal of this program is to increase access to Medicated Assisted Treatments in jails and drug courts. Each county starts at a different point in access to MAT and need not end at the same point. Therefore, individual county goals are different, depending on how far along the county is regarding implementation of MAT in the criminal justice system.

County teams include members from jail health care, jail custody/Sheriff, probation, county managers office, drug courts, county AOD agency, and others.



LOCATIONS

Cohort 1 Counties

Alameda	Mono	Santa Clara
Contra Costa	Nevada	Shasta
Imperial	Orange	Siskiyou
Kern	Placer	Solano
Kings	Plumas	Tehama
Los Angeles	Riverside	Ventura
Marin	San Luis Obispo	
Mendocino	Santa Barbara	



California Hub and Spoke System (H&SS)

- The California H&SS consists of narcotic treatment program (Hubs) and office-based treatment settings (Spokes) that provide ongoing care and treatment. The program aims to increase the number of providers prescribing buprenorphine for opioid use disorder.
- Composed of 18 Hubs and over 215 Spokes through a diverse network of community health partners.
- The CA H&SS is improving, expanding, and increasing access to MAT services throughout the state, especially in counties with the highest overdose rates.
- For additional information, visit www.dhcs.ca.gov/individuals/Pages/CA-Hub-and-Spoke-System.aspx.



Sacramento CA H&SS



Spokes:

- **CommuniCare - Davis Clinic**
2051 John Jones Road, Davis, CA 95616
- **CommuniCare - Salud Clinic**
500 B Jefferson Boulevard, Suites #180 & #195
West Sacramento, CA 95605
- **CORE Medical clinics**
2100 Capitol Ave, Sacramento, CA 95816
- **Winters Healthcare**
23 Main St, Winters, CA 95694



Addiction Treatment Starts Here (ATSH)

- The ATSH program includes three learning collaboratives designed to increase access to MAT through primary care, behavioral health and community partnerships.
- The learning collaboratives provide targeted technical assistance and education to help clinics and communities advance their efforts.

Primary Care

39 health centers across California are creating new or expanding existing MAT programs. Materials and resources are available at www.careinnovations.org/programs/addiction-primary-care/

Behavioral Health

10 mental health and SUD sites will design and launch MAT programs. Additional information available at www.careinnovations.org/programs/addiction-behavioral-health/

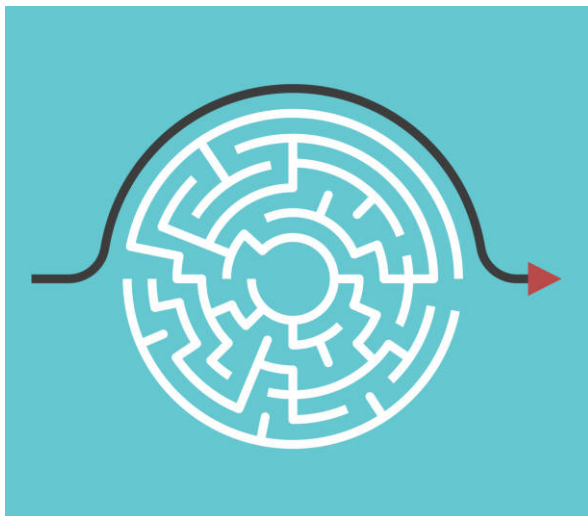
Community Partnerships

A 16-month learning collaborative between community stakeholders (e.g., health care providers, local community residents, public agencies, first responders, and other local organizations) to address OUD. Additional information available at www.careinnovations.org/addiction-community-partnerships-2019/



Transitions of Care

- The Transitions of Care project aims to strengthen the addiction treatment eco-systems in California counties and decrease gaps in coordination of patient transitions moving between higher and lower levels of care.
- The work will include surveying treatment systems stakeholders, developing gap analyses, conducting on-site process improvement events, and ongoing TA to increase the number of MAT access points and the overall addiction treatment capacity.



Locations

Counties: Fresno, Humboldt, Imperial, Kern, Lake, Mendocino, San Diego, San Francisco (tentative), Orange, & Ventura



MAT Access Points

- MAT Access Points aims to support MAT start-up activities and/or MAT enhancement efforts in at least 200 MAT Access Points throughout California, with the goal of increasing the number of patients treated with medications, counseling and other recovery services.
- MAT Access Points will ensure the delivery model enables positive treatment outcomes, safe management of care transitions, and long-term recovery.
- Eligible organizations include primary care facilities, hospitals, emergency departments, narcotic treatment programs/medication units, jails, residential centers, tribal health centers, DUI providers, community or county mental health centers, social services providers, community-based organizations, or other organizations either building new MAT access or expanding current MAT capacity.
- Funding can be used to purchase equipment, train staff, recruit staff, make capital improvements, and for other start-up and enhancement costs.



Special Populations: Perinatal

- The Perinatal MAT project aims to decrease neonatal abstinence syndrome severity and length of stay in the hospital, and increase the number of mothers in long-term recovery through MAT.



Develop an outreach and implementation plan to build on the framework of existing treatment access points



Develop or build upon existing protocols, guidelines, safety bundles, and tool kits



Distribute OUD patient education materials



Coordinate learning collaboratives



Provide technical assistance



Develop a resource library



LOCATIONS

Up to 16 counties including: Humboldt, Mendocino, Lake, Shasta, Sacramento, Stanislaus, San Joaquin, Orange, Ventura, and San Diego





Special Populations: Youth



YOR CALIFORNIA

California Youth Opioid Response

- The goal of the California Youth Opioid Response (YOR California) is to improve and expand access to prevention, intervention, and recovery services, as well as access points to medications for opioid use disorder (MOUD) as indicated, for youth (ages 12–24) and their families, thereby preventing opioid overdose-related deaths.
- This request for applications (RFA) provides up to \$11 million in funds for local and statewide efforts to reduce OUD among youth through increased access to enhanced youth-appropriate continuum of services including but not limited to MOUD.



Tribal MAT

- The Tribal MAT Program aims to improve MAT access for urban and tribal communities by increasing the total number of waived prescribers certified, and providing expanded MAT services that incorporate the values and culture of the communities being served.
- The Tribal MAT Program is composed of the following projects:
 - **MAT Champions:** Activities include engaging county local opioid coalitions/beginning Tribal opioid coalitions.
 - **Project ECHO:** Designed to expand MAT in Tribal and Urban communities.
 - **OUD Suicide Prevention:** Services include OUD prevention, suicide prevention, and development of curriculum around suicide prevention and its relation to OUD.
 - **Needs Assessment:** A statewide needs assessment to determine the MAT needs of the Tribal and Urban Indian communities in California.
 - **Tele-MAT:** Aims to provide MAT telehealth services for patients with OUD and co-occurring disorders in 12 Indian Health Programs statewide.



Toolkits

- Informational toolkits will be developed for a variety of stakeholders and target audiences.
- As each toolkit is finalized, an informational webinar will be hosted to summarize the content, and how the toolkit can be best utilized.
- A toolkit for residential treatment providers is available at www.dhcs.ca.gov/provgovpart/Pages/Training-and-Resources.aspx
- Upcoming toolkit topics/audiences include:
 - Consumers
 - Counselors
 - DUI Providers
 - Criminal Justice
 - Employers
 - Hospitals & emergency departments
 - Outpatient Facilities

PART I: Basic Overview of Medication Assisted Treatment

What is Medication Assisted Treatment (MAT)?

Evidence-based treatment for patients in need

FDA-approved medication + Counseling and behavioral therapies = Whole patient approach to treatment

MAT is the use of United States Food and Drug Administration (FDA)-approved medications, in combination with counseling and behavioral therapies, to provide a "whole-patient" approach to the treatment of substance use disorders. MAT is an evidence-based treatment for clients with opioid use disorders (i.e. addiction to heroin, illicit fentanyl, or prescription pain medications) and clients with alcohol use disorders.

The addition of MAT has been shown to significantly reduce the rate of relapse, compared to abstinence-based treatment. For opioid use disorders (OUD), use of methadone or buprenorphine cuts overdose rates by half or more, and reduces rates of HIV and hepatitis C transmission.¹ While MAT is considered standard of care for clients with opioid use disorders and alcohol use disorders, there is no FDA-approved MAT for other substance use disorders available currently.

Clients should have access to MAT while living in a residential treatment facility. Residential treatment facilities are not allowed to deny admission to potential clients because they have a valid prescription from a licensed health care professional for an FDA-approved medication for MAT.²

In addition, residential treatment without medication for clients with OUD puts them at high risk of overdose after departure. Residential treatment facilities can provide access to MAT for their clients in treatment, either within the facility (through incidental medical services) or in the community, through relationships with opioid treatment programs, community health centers, or other MAT access points.

REDUCED RATE OF RELAPSE

MAT has been shown to reduce the rate of relapse, compared to abstinence-based treatment.



This resource was created by Harbage Consulting with support from the California Health Care Foundation.

¹ National Institute on Drug Abuse, "Effective Treatments for Opioid Addiction," available at bit.ly/2o70W6E.
² SB 992, 2018. Available at bit.ly/2o70W6E.



Media Campaign

MAT Access Point Expansion

Media Campaign

- Media Solutions is leading an effort to design a statewide, multi-media campaign targeted at individuals with OUD and their families, with an emphasis on making connections to treatment.

**CHOOSE
CHANGE
CALIFORNIA**



Media Campaign



**“Let’s talk about
treatment options.”**

**CHOOSE
CHANGE
CALIFORNIA**

**Proven treatment for opioid addiction
starts here. [ChooseMAT.org](https://www.ChooseMAT.org)**

A close-up portrait of a young woman with dark, curly hair, looking slightly to her right with a gentle smile. The background is a solid, vibrant green.

**“Let’s talk
about
treatment
options.”**

Proven treatment for opioid addiction starts here.

Medication Assisted Treatment (MAT) is the use of FDA-approved medications for the treatment of opioid addiction. When coupled with counseling, MAT treats the whole patient and significantly reduces the rate of relapse. Medi-Cal, Medicare and many private insurance plans cover MAT. You can get MAT through a primary care doctor, licensed narcotic treatment programs, outpatient treatment programs, or licensed residential treatment facilities.

Find a proven treatment option that's right for you at [ChooseMAT.org](https://www.ChooseMAT.org).

The logo for "Choose Change California". It consists of a blue speech bubble shape containing the text "CHOOSE CHANGE CALIFORNIA" in white, bold, sans-serif capital letters. The word "CALIFORNIA" is positioned on a separate line below "CHANGE".

**CHOOSE
CHANGE
CALIFORNIA**

Funding for this advertisement was made possible by SAMHSA. The views expressed in this advertisement do not necessarily reflect the official policies of the Department of Health and Human Services or imply endorsement by the U.S. Government. Stock photo: Pixed by iStock.



Other MAT Expansion Projects

SUD Providers	
NTP Treatment Capacity	<ul style="list-style-type: none">• The goal of this project is to expand MAT capacity for California's Narcotic Treatment Programs (NTPs), with an emphasis on increasing access to buprenorphine.• Participating NTPs will be trained on the efficacy and usage of FDA-approved MAT, receive information about the Drug Addiction Treatment Act (DATA) 2000 waiver, and learn more about requirements for NTPs when prescribing MAT.
DUI MAT Integration	<p><u>California Highway Patrol (CHP) Project</u></p> <ul style="list-style-type: none">• CHP will develop a free Drug Impairment Intervention Training series to assist DUI program providers with recognition and intervention of OUD amongst the DUI offender population.• Register Today: https://bit.ly/2EKOYZP
	<p><u>Linkages to Resources</u></p> <ul style="list-style-type: none">• The California Association of DUI Treatment Programs (CADTP) will support the creation of linkages to resources and referral options to MAT in order to reduce opioid overdoses, opioid related traffic fatalities, and curb recidivism amongst DUI program participants.



Other MAT Expansion Projects

Justice Involved	
County Touchpoints	<ul style="list-style-type: none">• The goal of this project is to develop and implement a Targeted Information Campaign to increase awareness of treatment resources, provide information about accessing MAT services, and educate the target audience on overdose prevention and intervention tactics.• Will target criminal justice audience including adult, family, and juvenile courts, judges, probation and parole departments, attorneys, and local law enforcement.



Other MAT Expansion Projects

Mentoring Resources	
California Poison Control Center	<ul style="list-style-type: none">The University of California, San Francisco is building expertise of opioid overdose, opioid withdrawal, and initiation of buprenorphine for pharmacists and physicians staffing the California Poison Control Center.
California Substance Use Line	<ul style="list-style-type: none">The University of California, San Francisco will expand current 24/7 MAT mentorship network to cover all new emergency departments, primary care, mental health, and hospital access points. Funding will be utilized to cover training costs and extra staff required for project ramp-up.
Mentored Learning	<ul style="list-style-type: none">The California Society of Addiction Medicine will expand the mentored learning project. Funding will support an additional 80 slots over a two-year period.



Other MAT Expansion Projects

Mentoring Resources	
Waivered Prescriber Support	<ul style="list-style-type: none">• The University of California, Los Angeles will deploy a survey to all California waivered prescribers, then based on the results, provide support to waivered prescribers via “physician champions” who would be hired to travel throughout California to provide on-site support.
SUD Workforce: Recovery & MAT Summit	<ul style="list-style-type: none">• California State University, Sacramento will host two convenings about MAT (in the northern and southern regions of the state) for those in the behavioral health workforce.• The training will provide education and resources pertaining to MAT, tools to address and reduce stigma, and ways the workforce can join California’s current efforts to address SUD emerging epidemics and will take place:<ul style="list-style-type: none">• Northern California: June 4, 2019 at the DoubleTree Sacramento.• Southern California: June 11, 2019 at the DoubleTree Anaheim-Orange County.• Register Today: www.cce.csus.edu/MATSummit



Other MAT Expansion Projects

Mentoring Resources & Overdose Prevention

Academic Detailing & Fentanyl Reporting & Surveillance

- The California Department of Public Health (CDPH) will work to incorporate academic detailing into health plans and health payer systems and will conduct up to four academic detailing training sessions to train new health care professional detailers within health plan and payer systems to systematically implement academic detailing.
- CDPH will also establish a fentanyl reporting system and improve detection of fentanyl outbreaks. Also improve the opioid surveillance dashboard for poly drug use and expand the dashboard to include social determinants of health.



Other MAT Expansion Projects

Overdose Prevention	
Drug Take-Back	<ul style="list-style-type: none">• The California Product Stewardship Council will support statewide drug take-back programs in approved locations.
CURES Optimization	<ul style="list-style-type: none">• The California Department of Justice will support the optimization and performance of California's Prescription Drug Monitoring Program database.
Technical Assistance	
Evaluation	<ul style="list-style-type: none">• The University of California, Los Angeles will evaluate the California Hub and Spoke project and select SOR projects.



Other MAT Expansion Projects

Other Projects	
California Conservation Corps	<ul style="list-style-type: none">• Continuity Consulting will establish an initiative with the California Conservation Corps and the California Department of Corrections and Rehabilitation Division of Juvenile Justice to perform initial assessments to determine the activities that can address the opioid crisis through prevention, treatment and/or recovery.
Supportive Housing	<ul style="list-style-type: none">• Health Right 360 is providing access to recovery residence transitional housing and peer support for homeless individuals with OUD in San Francisco to facilitate continued engagement in SUD treatment and related recovery support services.



Other MAT Expansion Projects

Other Projects	
Young People in Recovery	<ul style="list-style-type: none">• Young People in Recovery (YPR) is a grass roots organization focused on creating recovery-ready communities throughout the nation for young people in, or seeking, recovery.• YPR is partnering with the DHCS to launch YPR chapters and life-skills curriculum programs to individuals in recovery from opioid use and substance use disorders.
Primary Care Residency	<ul style="list-style-type: none">• The California Academy of Family Physicians will develop and implement addiction medicine and MAT curriculum in residency programs throughout California.



Resources

For additional information, please see the MAT Expansion Project page on the DHCS Website: <https://bit.ly/2w2Vx9f>

For questions regarding the MAT Expansion Project, please contact DHCSMATExpansion@dhcs.ca.gov